



Quickstart Guide
Vodafone Mobile Wi-Fi
R207-Z

Welcome

to the world of mobile communications

- 1 Welcome
- 2 Device overview
- 3 Getting started
- 5 Mobile Wi-Fi Web app
- 6 Web app overview
- 7 Current network panel
- 8 Mobile Wi-Fi Monitor app
- 9 Hints and tips
- 10 Glossary



Welcome

Your Vodafone Mobile Wi-Fi creates a personal portable Wi-Fi network. Use it to share your secure mobile broadband internet connection with other Wi-Fi-enabled devices, such as computers, Apple® iPhone, iPad or iPod touch, Android smartphones and tablets like the Samsung® Galaxy Tab, or mobile gaming devices like Nintendo® DSi.

You can use battery, mains or USB to power your Vodafone Mobile Wi-Fi. This flexibility makes it easy to position your Vodafone Mobile Wi-Fi to get the best mobile coverage.

Licenses

Where the applicable license entitles you to the source code of such software and/or other additional data, you may obtain it for a period of three years after purchasing this product, and, if required by the license conditions, for as long as we offer customer support for the product.

You may download the source codes from <http://www.vodafone.com/R207-Z>.

Notice

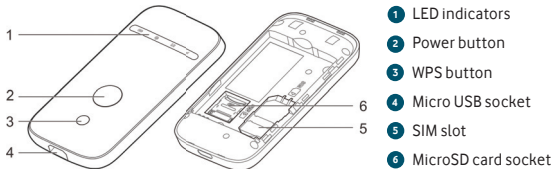
Copyright © ZTE 2015.

All Rights Reserved

Your Vodafone Mobile Wi-Fi is made exclusively for Vodafone by ZTE.

No part of this guide may be reproduced or transmitted in any form or by any means without prior written consent of ZTE.

Device overview



Mobile broadband signal



Red blinking - searching for network



Red - SIM or PIN required



Amber - low signal



Green blinking - 2G or 3G available



Green - connected to 2G or 3G

WPS & Wi-Fi



Blue - Wi-Fi active



Blue blinking - Wi-Fi and WPS active

Battery charge



Green - OK



Green blinking - charging



Red blinking - low



Standby - not charging

SMS text messages



Blue - unread SMS



Blue blinking - SMS Inbox full



No SMS

Getting started

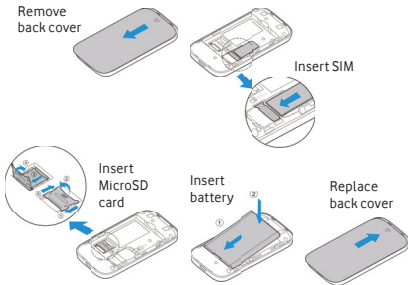
Tip:

Charge your Mobile Wi-Fi fully (mains: 3.5 hours) before using it in battery mode.

*Please only use the charger supplied with this device.

Step 1

Insert your SIM, battery and optionally a MicroSD card.



Step 2

Plug your Vodafone Mobile Wi-Fi into the mains* or your computer to charge it while you are using it.

Getting started

Step 3

Press and hold the power button for 3 seconds to switch on your Vodafone Mobile Wi-Fi. It will begin connecting to the mobile broadband network.

Step 4 - USB

If you plug your Vodafone Mobile Wi-Fi into your computer with a USB cable, you may be asked to enter your PIN to unlock your SIM. An icon for the Vodafone Mobile Wi-Fi Web app will appear on your desktop.

Step 4 - Wi-Fi

When connecting your computer or another device via Wi-Fi, select your Vodafone Mobile Wi-Fi network's name (its 'SSID') from the list of available networks, click Connect and enter the secure Wi-Fi network key (the 'WPA2 password'). The name and key are inside the back cover of your Vodafone Mobile Wi-Fi and also on a printed reminder card. You may be asked to enter your PIN to unlock your SIM.

Congratulations - you are connected to the internet via Vodafone Mobile Wi-Fi.

Mobile Wi-Fi Web app

Tip:

Save the addresses for your Mobile Wi-Fi as favourites in your web browser.

To check the status of your mobile broadband and Wi-Fi networks, manage SMS text messages or change the settings of your Mobile Wi-Fi, you can use the Vodafone Mobile Wi-Fi Web app:

- Connect to your Vodafone Mobile Wi-Fi via Wi-Fi or with a USB cable
- If you installed your Vodafone Mobile Wi-Fi via USB, double-click the Vodafone Mobile Wi-Fi icon that was created on your desktop
- Alternatively - and particularly if you did not install via USB - open <http://VodafoneMobile.wifi> or <http://192.168.0.1> in your web browser.

To use the Vodafone Mobile Wi-Fi Web app via a USB cable or via Wi-Fi, you need:

- A computer with at least Windows XP[®] SP3, or
- An Apple Mac with at least OS X[®] 10.6 Snow Leopard.

You can also manage your Vodafone Mobile Wi-Fi via its Wi-Fi network, but not via a USB cable, using:

- Linux or Windows[®] 8 RT, or
- iPhone, iPad, iPod touch, or any other smartphone or tablet.

Web app overview

- 1 Navigation tabs: Select Mobile Wi-Fi, Storage, SMS or Account view
- 2 Navigation bar: Select an area within each view
- 3 Current network panel: Status of mobile broadband network, Wi-Fi network, battery and connected devices
- 4 Content area: Content for current area
- 5 Context help: Help for current area
- 6 Language selection: Defaults to browser language
- 7 Login/Logout: For advanced settings. The default password is 'admin'.

The screenshot shows the Vodafone Mobile Wi-Fi web app interface. The top navigation bar (1) includes 'Mobile Wi-Fi', 'Choose language', 'Password', 'Enter Password', and 'Login'. Below this is a secondary navigation bar (2) with 'Mobile Broadband' and 'Help'. The main content area (4) is divided into three sections: a welcome message, an inbox, and a help section. The help section (5) contains 'Important issues to check include' and 'Should you still be unable to connect please contact the help desk for further advice'. On the right side, there is a 'Home network' panel (3) displaying network status: 'Signal' (green bars), 'Status' (Connected with a green checkmark), 'Network' (vodafone UK 3G), 'Time connected' (00:00:55), 'Total volume' (24.55MB), and 'Battery Status (100%)'. Below the battery status is a 'Wi-Fi Status' section and a 'Connected devices (4)' section.

Current network panel

The Current network panel appears on the right-hand side of every view in the Mobile Wi-Fi Web app, giving you a quick summary of the status of your Mobile Wi-Fi. Below it are additional panels for battery, Wi-Fi and the status of other devices sharing your Wi-Fi network.

The screenshot displays the Mobile Wi-Fi Web app interface. At the top, there is a header for "Home network" with a signal strength icon. Below this, several network status metrics are listed:

- Mobile number**: (blank)
- Signal**: Represented by a green signal strength icon.
- Status**: Connected, accompanied by a green checkmark icon.
- Network**: vodafone UK 3G
- Time connected**: 00:00:53, accompanied by a clock icon.
- Total volume**: 24.84MB
- Up**: 80b/s, accompanied by an upward arrow icon.
- Down**: 48b/s, accompanied by a downward arrow icon.

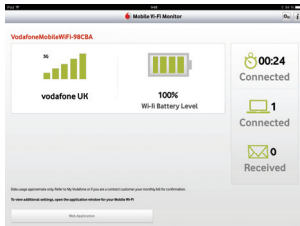
Below the network status, there are three expandable panels, each with a plus sign icon:

- Battery Status (100%)**
- Wi-Fi Status**
- Connected devices (4)**

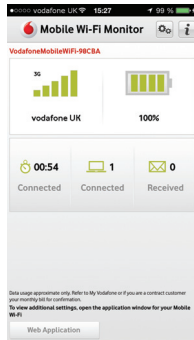
Mobile Wi-Fi Monitor app

If you have an Apple iOS® or Android device, you can also check the status of your Mobile Wi-Fi using the Vodafone Mobile Wi-Fi Monitor app. Download the app from the iTunes or Google Play app stores.

iPad / tablet



iPhone / smartphone



Hints and tips

Wi-Fi security

Please ensure that the Wi-Fi security settings meet your personal requirements. To change the admin password, open the Vodafone Mobile Wi-Fi Web app:

- Enter 'admin' into the Password field and click 'Login'
- Select Router on the Navigation bar
- Select 'Router Settings' from the left-hand Menu bar.

To change your Wi-Fi network name (SSID) and the key:

- Select Wi-Fi on the Navigation bar
- Select 'Security' from the left-hand Menu bar.

Wireless Protected Setup (WPS)

Pressing and holding the WPS button on your Vodafone Mobile Wi-Fi for 5 seconds will switch WPS on (the WPS & Wi-Fi LED starts flashing). You can then connect any WPS-enabled device without having to enter the network key.

Further Support

- Select Help on the Navigation bar in the Vodafone Mobile Wi-Fi Web app
- Select 'Support' from the left-hand Menu.

The Content area will show how to contact your mobile network operator.

You can download an electronic version of this user guide at

<http://vodafone.com/r207-z>

Glossary

Bearer Communication method used for data transport over the mobile network, eg. 3G Broadband, HSPA, 3G, etc.

Home network The network of the mobile operator who provided your SIM.

Roaming You can use your mobile device on any other mobile network that has a roaming agreement with your operator, whether in your country or abroad.

SIM Your Subscriber Identity Module is the small plastic chip that you will have received together with your mobile contract. Your SIM has gold contacts on one side.

WPA2 An alternative name for the Wi-Fi network key. On Macs with OS X this is called 'WPA2 personal'.

EC DECLARATION OF CONFORMITY



It is hereby declared that following designated product:

Product Type: HSPA+ UE

Model No: R207-Z

Product Description: HSPA+ UE

Complies with the essential protection requirements of Directives on Radio and Telecommunication Terminal Equipment (Directive 1999/5/EC), Restriction of the Certain Hazardous Substances in electrical and electronic equipment (Directive 2011/65/EU), Eco-design Requirements for Energy-Related Products (Directive 2009/125/EC) and their amendments.

This declaration applies to all specimens manufactured identical to the samples submitted for testing/evaluation.

Assessment of compliance of the product with the requirements relating to Directive 1999/5/EC was performed by American TCB (Notified Body No 1588) and assessment of compliance of the product with the requirements relating to Directive 2009/125/EC was performed by ZTE Corporation Reliability Testing Centre, assessment of compliance of the product with the requirements relating to Directive 2011/65/EU was performed by Intertek Testing Services Ltd., Shanghai Lab. The assessments were based on the following regulations and standards:

Requirement	Standard	Report No.
Health and safety	EN 60950-1:2006+ EN 60950-1:2006/A11:2009+ EN 60950-1:2006/A12:2011, EN 60950-1:2006/A1:2010	114Z18048-SEM01
	EN62311:2008; EN 62209-2:2010; EN62479:2010; EN 50566: 2013	114Z18048-SEM02
EMC	EN 301 489-1 V1.9.2; EN 301 489-7 V1.3.1;	2014EMC310
	EN 301 489-17 V2.1.1; EN 301 489-24 V1.5.1;	114Z48048EMC01
Radio Spectrum	EN 301 511 V9.0.2;	2014FTA307;2014FTA308
	EN 301 908-1 V6.2.1; EN 301 908-2 V6.2.1;	2014FTA309
	EN 300 328 V1.8.1;	114Z48048-GPM01;
		114Z48048-SRD02
RoHS	IEC 62321:2013	141000875SHA-001

This declaration is the responsibility of the manufacturer:

ZTE Corporation
ZTE Plaza, Keji Road South, Hi-Tech, Industrial Park,
Nanshan District, Shenzhen, Guangdong, 518057, P.R.China

Authorised person signing for the company:

XU Feng Quality Director Of ZTE Corporation

Name in block letters & position in the company

Shenzhen, 18th November 2014

Place & date

Legal valid signature

Notes

The term Mobile Broadband together with the 'birds' design is a trademark of GSMC Limited.



Mobile
Broadband

C € 1588

© Vodafone 2015. Vodafone and the Vodafone logos are trade marks of the Vodafone Group. Any product or company names mentioned herein may be the trade marks of their respective owners.

R207-Z Mobile Wi-Fi QSG 12/14_en_GB



vodafone